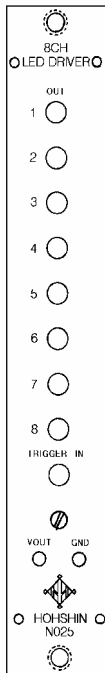


# N I M

## 8 c h LED Driver

### (N025)



◎Photo-Multiplier, silicon photo-detector Pinhot movement confirmation

It is the most suitable for the timing test and so on.

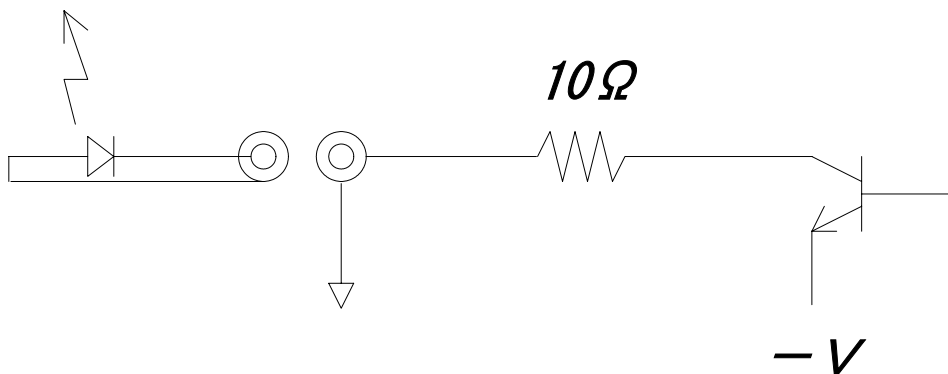
◎ An electric current limitation is possible in internal VR.

### Outline

It synchronizes in one NIM level signal, and it is the module to take a drive in eight LED's at the same time.

### How to use

When the signal of NIM is input, LED is charged with electricity in the width that signal width, and it can be polished. The electricity which it is charged with is adjusted with VR downward. An output circuit has protection resistance  $10\Omega$ , and becomes the following connection.



Form	:	NIM standard 1 width module
Power supply	:	+ 6V 200mA
		- 6V 200mA
		- 12V 300mA